

Flowmatic® NSF certified manifold RO systems reduce these drinking water contaminants

- Chlorine
- Cadmium
- Giardia Cysts
- Entamoeba
- Selenium
- Copper
- Lead
- Arsenic
- Cryptosporidium
- Chromium (Hexavalent)
- Radium 226 / 228
- Chromium (Trivalent)
- Barium
- Fluoride
- TDS
- Tastes & odors*
- Perchlorate
- Turbidity
- Toxoplasma
- Nitrate / Nitrite

*Tested and verified by independent laboratory testing.

Feed water parameters

Maximum TDS	2,000 ppm
Iron, maximum	0.3 ppm
Hardness (less than)	15 gpg
Hydrogen Sulfide	Zero
Manganese (less than)	0.05 ppm
Turbidity (less than)	1 NTU
Pressure, minimum without pump	30 psi
Pressure, maximum	100 psi
pH	3 - 11

Note: Pretreatment suggested if conditions exceed parameters.

Models

FMRO5-M-PT 50 GPD membrane with plastic tank
 FMRO5-M-MT 50 GPD membrane with metal tank

Warranty

Systems are assembled in Phoenix, Arizona, and come with a one year limited warranty. (Please see warranty card for more details.)

Available from authorized dealers

Flowmatic® reverse osmosis drinking water systems are available from authorized dealers. For sales, installation and service please contact the dealer listed below:

Authorized dealer



Specifications

Production, FMRO5-M-PT	50 GPD
Production, FMRO5-M-MT	50 GPD
Storage tank capacity	2.6 gals.
Faucet	Lead-free*
Membrane	Thin Film
NSF Certification	Std. 58

* Meets State of California's lead-free requirements.

Maintenance

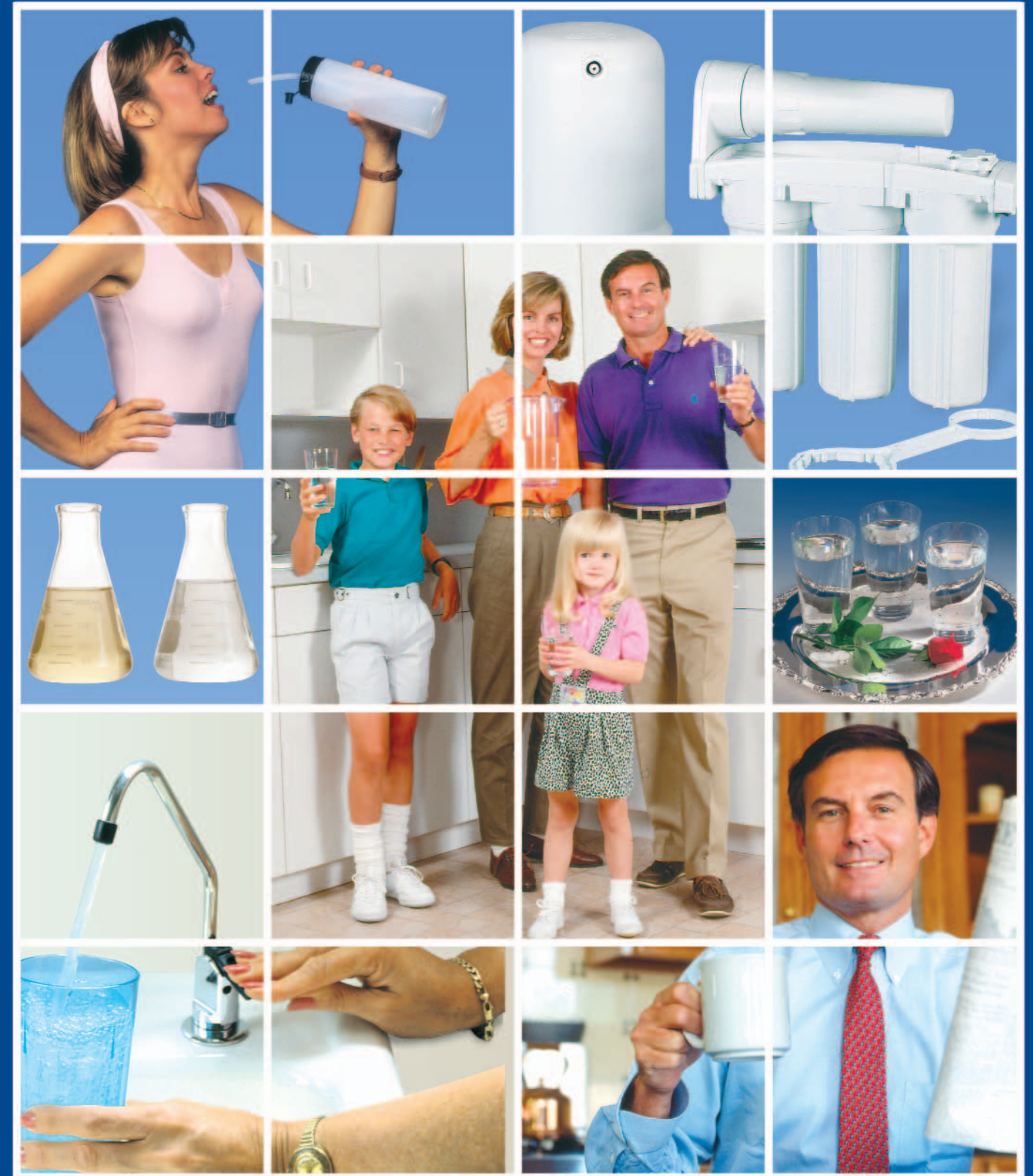
Recommended membrane and cartridge replacement:

Membrane:

Change based on periodic TDS rejection tests, or change is typically necessary every 2-3 years.

Pre and post filters:

Change every six months under heavy usage or every year with light usage.



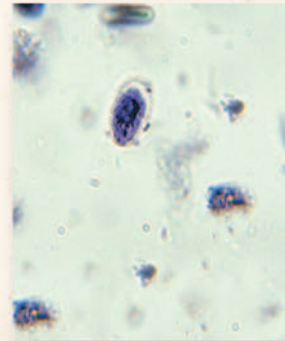
How to get great tasting & more healthful drinking water for your entire family.



Many water quality problems.



Contaminants



Water for drinking, beverages and preparing foods should be safe and free from harmful contaminants. This is particularly important if you get your water from a private well. And even if your municipal water meets all standards, it may contain other impurities that could be responsible for long term health effects.

Turbidity & color

Cloudy water is due to turbidity, or finely divided particles. Color in water is most often due to dissolved organic matter. Often, these problems result in water that is unpleasant to drink. Turbidity and color in water can easily be corrected with point-of-use water treatment systems.



Foul taste & odors

From its passage from clouds to your tap, water comes in contact with many different impurities which can produce foul taste and odors that can ruin the enjoyment of prepared foods and beverages.



If you think bottled water is the answer, Think again!

Many individuals are buying bottled water because they are concerned about drinking water quality. Bottled water is expensive, and it's very inconvenient. Water produced by RO systems cost pennies a gallon, compared to a dollar or more for bottled water.



One solution!

Reverse osmosis...

Removes a wide range of drinking water contaminants.

Reverse osmosis drinking water systems include membrane separation, activated carbon adsorption and micro filtration to reduce a wide range of contaminants that can be found in drinking water, including Nitrate, Nitrite, Copper, Radium Lead, Arsenic, Fluoride, Giardia Cysts, Chromium, Cryptosporidium, tastes and odors.



Flowmatic® single-piece, manifold reverse osmosis systems

Enjoy five stage water treatment with our highly efficiency RO membrane, designed to reduce harmful contaminants; three pre-filters to reduce sediment and chlorine; a post filter for a final polishing after storage tank; and a dedicated faucet to dispense great tasting, more healthful drinking water.

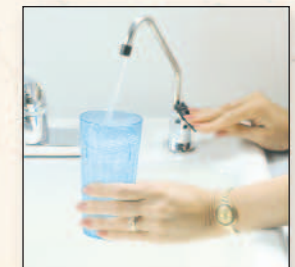
Innovative, single-piece manifold design

Our single-piece manifold eliminates 17 hose connections, compared to conventional models, for greater water flow. With fewer connections, there's less chance problems will occur.

Easy installation!

Installations are easy, since the major components are an integral part of the single-piece manifold.

And membranes are easily replaced with our unique push / pull o-ring design.



Dedicated faucet for RO water.

Top quality, John Guest® fittings

Manifold hose connections are easy, safe and secure!



ROPRO® storage tank

Our "high profile" storage tanks take less space below sink. Polypropylene construction will not chip, dent or rust.

NSF® certified

Our entire manifold systems are NSF Standard 58 Certified.

Cool, dual wrench

Systems come with dual wrench to easily remove filter sumps and membrane housing.

Optional metal tank

Manifold models are also available with metal storage tanks, so you may choose the tank option you prefer!