



Mur-lok™ Polypropylene Quick-Connect Fittings



Mur-lok™ Polypropylene Quick-Connect Fittings

G.A. Murdock offers the largest selection of polypropylene quick-connect fittings on the market. These fittings are designed for drinking water and beverage applications and offer a higher level of chemical resistance than typical quick-connect fittings.


- All Polypropylene Construction with Stainless Steel Collet Teeth
- Dual EPDM Chloramine Resistant O-ring Technology
- NSF Standard 58 Certified

Designed for polyethylene, polypropylene, nylon, polyurethane, and soft metal tubing which meets the specifications shown on the back cover. The use of hose stems and clamps is required when using braided plastic hose.

Please contact our technical support team for compatibility with aggressive chemicals.


All products shown are constructed of FDA approved materials and suitable for food contact.

Working Pressure: 150 psi @ 70° F 10 bar @ 20° C
60 psi @ 150° F 4 bar @ 60° C



Male NPTF Connectors

Part Number	Mur-lok	Thread
O0420216	1/4"	1/8" Male NPTF
O0420416	1/4"	1/4" Male NPTF
O0420616	1/4"	3/8" Male NPTF
O0520216**	5/16"	1/8" Male NPTF
O0520416*	5/16"	1/4" Male NPTF
O0520616**	5/16"	3/8" Male NPTF
O0620216*	3/8"	1/8" Male NPTF
O0620416	3/8"	1/4" Male NPTF
O0620616	3/8"	3/8" Male NPTF
O0620816	3/8"	1/2" Male NPTF
O0820616*	1/2"	3/8" Male NPTF
O0820816*	1/2"	1/2" Male NPTF




Fixed NPTF 90° Elbows

Part Number	Mur-lok	Thread
P0420206	1/4"	1/8" Female NPTF
P0420216	1/4"	1/8" Male NPTF
P0420416	1/4"	1/4" Male NPTF
P0420616	1/4"	3/8" Male NPTF
P0620416	3/8"	1/4" Male NPTF
P0620616	3/8"	3/8" Male NPTF




Swivel NPTF 90° Elbows

Part Number	Mur-lok	Thread
Q0420216	1/4"	1/8" Male NPTF
Q0420416	1/4"	1/4" Male NPTF
Q0620416	3/8"	1/4" Male NPTF
Q0620616	3/8"	3/8" Male NPTF
Q0820616*	1/2"	3/8" Male NPTF
Q0820816*	1/2"	1/2" Male NPTF




Male Flare Connectors

Part Number	Mur-lok	Thread
O0420476**	1/4"	1/4" Male Flare
O0620476**	3/8"	1/4" Male Flare
O0620676**	3/8"	3/8" Male Flare




Union & Reducing 90° Elbows

Part Number	Mur-lok	Mur-lok
Q0420426	1/4"	1/4"
Q0520426*	5/16"	1/4"
Q0520526*	5/16"	5/16"
Q0620426	3/8"	1/4"
Q0620526*	3/8"	5/16"
Q0620626	3/8"	3/8"
Q0820626*	1/2"	3/8"
Q0820826*	1/2"	1/2"



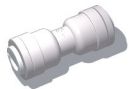
NPTF Stem Adapters

Part Number	Stem	Thread
S0460216	1/4"	1/8" Male NPTF
S0460416	1/4"	1/4" Male NPTF
S0460616	1/4"	3/8" Male NPTF
S0560216**	5/16"	1/8" Male NPTF
S0660416	3/8"	1/4" Male NPTF
S0660616	3/8"	3/8" Male NPTF
S0860616*	1/2"	3/8" Male NPTF
S0860816*	1/2"	1/2" Male NPTF



Dividers

Part Number	Mur-lok
V0420006	1/4"
V0520006**	5/16"
V0620006	3/8"



Union Connectors & Reducing Unions

Part Number	Mur-lok	Mur-lok
R0420426	1/4"	1/4"
R0520426**	5/16"	1/4"
R0520526*	5/16"	5/16"
R0620426	3/8"	1/4"
R0620526*	3/8"	5/16"
R0620626	3/8"	3/8"
R0820526**	1/2"	5/16"
R0820626*	1/2"	3/8"
R0820826*	1/2"	1/2"



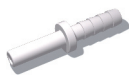
Union Tees

Part Number	Mur-lok
V0420426	1/4"
V0520526**	5/16"
V0620426	3/8" x 3/8" x 1/4"
V0620626	3/8"
V0820626*	1/2" x 1/2" x 3/8"
V0820826*	1/2"



Swivel Tees

Part Number	End	Branch	End
V0420216	1/4" ML	1/4" ML	1/8" Male NPTF
V0420218	1/4" ML	1/8" Male NPTF	1/4" ML
V0420416	1/4" ML	1/4" ML	1/4" Male NPTF
V0420418	1/4" ML	1/4" Male NPTF	1/4" ML
V0620416	3/8" ML	3/8" ML	1/4" Male NPTF
V0620418	3/8" ML	1/4" Male NPTF	3/8" ML
V0620616	3/8" ML	3/8" ML	3/8" Male NPTF
V0620618	3/8" ML	3/8" Male NPTF	3/8" ML
V0820616*	1/2" ML	1/2" ML	3/8" Male NPTF
V0820618*	1/2" ML	3/8" Male NPTF	1/2" ML
V0820816*	1/2" ML	1/2" ML	1/2" Male NPTF
V0820818*	1/2" ML	1/2" Male NPTF	1/2" ML



Tube-to-Hose Stems

Part Number	Stem	Barb
S0460446	1/4"	1/4"
S0660446	3/8"	1/4"
S0660546**	3/8"	5/16"
S0660646	3/8"	3/8"
S0660846	3/8"	1/2"
S0860646*	1/2"	3/8"
S0860846*	1/2"	1/2"



Tube-to-Hose Stem 90° Elbows

Part Number	Stem	Barb
S0460448**	1/4"	1/4"
S0460548**	1/4"	5/16"
S0560448**	5/16"	1/4"
S0560548**	5/16"	5/16"
S0660448**	3/8"	1/4"



Plug in 90° Elbows

Part Number	Mur-lok	Stem
T0420466	1/4"	1/4"
T0420666	1/4"	3/8"
T0520566**	5/16"	5/16"
T0520666**	5/16"	3/8"
T0620666	3/8"	3/8"
T0820866*	1/2"	1/2"



Reducers

Part Number	Mur-lok	Stem
S0420566**	1/4"	5/16"
S0420666	1/4"	3/8"
S0520666*	5/16"	3/8"
S0620866	3/8"	1/2"



Female Connectors

Part Number	Mur-lok	Thread
U0420206	1/4"	1/8" Female NPTF
U0420406	1/4"	1/4" Female NPTF
U0620406	3/8"	1/4" Female NPTF



Female Flare Connectors

Part Number	Mur-lok	Thread
U0420476	1/4"	1/4" Female Flare
U0520476**	5/16"	1/4" Female Flare
U0620476	3/8"	1/4" Female Flare
U0620676**	3/8"	3/8" Female Flare



Faucet/Refrigerator Connectors

Part Number	Mur-lok	Thread
U0420706	1/4"	7/16" - 24 UNS
U0620706	3/8"	7/16" - 24 UNS



Garden Hose Connectors

Part Number	Mur-lok	Garden Hose Thread
U0421406	1/4"	3/4" Female
U0621406	3/8"	3/4" Female

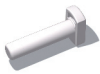


End Stops

Part Number	Mur-lok
W0420006	1/4"
W0620006	3/8"



Mur-lok™ Flexible PVC and LLDPE Tubing





Plugs

Part Number	Stem
X0420006	1/4"
X0520006	5/16"
X0620006	3/8"
X0820006	1/2"


Mur-lok™ Flexible PVC Drain Line

Mur-lok™ Flexible PVC Drain Line is designed for water softeners. The Drain Line is available in clear or UV resistant black and has excellent kink resistance.



Flexible PVC Tubing

Part Number	OD	ID	Color	Length
L1201506	3/4"	1/2"	Black	150'
L1201507	3/4"	1/2"	Clear	150'
L1401006	7/8"	5/8"	Black	100'
L1401007	7/8"	5/8"	Clear	100'




Bulkhead Unions

Part Number	Mur-lok
R0420429**	1/4"
R0520529**	5/16"
R0620429**	3/8" x 1/4"
R0620629**	3/8"
R0820429**	1/2" x 1/4"
R0820829**	1/2"

Mur-lok™ LLDPE Tubing


Mur-lok™ Linear Low Density Polyethylene (LLDPE) tubing is constructed of FDA approved materials and has a wide range of chemical compatibility. Mur-lok™ LLDPE tubing has outstanding stress crack resistance and has exceeded 1000 continuous hours of ASTM D-1693 testing (10% Igepal).

Acetel Locking Clips


Part Number	Mur-lok	Color
Y0420001	1/4"	White
Y0420006	1/4"	Black
Y0420009	1/4"	Red
Y0620001	3/8"	White
Y0620006	3/8"	Black
Y0620009	3/8"	Red
Y0820001	1/2"	White
Y0820006	1/2"	Black
Y0820009	1/2"	Red

Mur-lok™ Acetel locking clips are not NSF 58 certified



LLDPE Tubing - Boxed Coil

Part Number	OD	ID	Color	Length
L0402501	1/4"	0.170"	White	250'
L0402505	1/4"	0.170"	Blue	250'
L0402506	1/4"	0.170"	Black	250'
L0402507	1/4"	0.170"	Natural	250'
L0402509	1/4"	0.170"	Red	250'
L0502506	5/16"	0.187"	Black	250'
L0502507	5/16"	0.187"	Natural	250'
L0602501	3/8"	0.250"	White	250'
L0602505	3/8"	0.250"	Blue	250'
L0602506	3/8"	0.250"	Black	250'
L0602507	3/8"	0.250"	Natural	250'
L0602509	3/8"	0.250"	Red	250'
L0801005	1/2"	0.375"	Blue	100'
L0801006	1/2"	0.375"	Black	100'
L0801007	1/2"	0.375"	Natural	100'
L0801009	1/2"	0.375"	Red	100'



Spare Parts

Part Number	Description
L0TOOL3	Mur-lok™ Release Tool - 1/4", 3/8", 1/2"
Z0400000	1/4" Mur-lok™ O-ring
Z0422401	1/4" Mur-lok™ Collet - White
Z0422406	1/4" Mur-lok™ Collet - Black
Z0422408	1/4" Mur-lok™ Collet - Grey
Z0422409	1/4" Mur-lok™ Collet - Red
Z0500000	5/16" Mur-lok™ O-ring
Z0522401	5/16" Mur-lok™ Collet - White
Z0522406	5/16" Mur-lok™ Collet - Black
Z0522408	5/16" Mur-lok™ Collet - Grey
Z0522409	5/16" Mur-lok™ Collet - Red
Z0600000	3/8" Mur-lok™ O-ring
Z0622401	3/8" Mur-lok™ Collet - White
Z0622406	3/8" Mur-lok™ Collet - Black
Z0622408	3/8" Mur-lok™ Collet - Grey
Z0622409	3/8" Mur-lok™ Collet - Red
Z0800000	1/2" Mur-lok™ O-ring
Z0822401	1/2" Mur-lok™ Collet - White
Z0822406	1/2" Mur-lok™ Collet - Black
Z0822408	1/2" Mur-lok™ Collet - Grey
Z0822409	1/2" Mur-lok™ Collet - Red

Additional colors are available, please call (800) 568-7565.

*Available 2nd Quarter 2004
**Available 3rd Quarter 2004

LLDPE Tubing - Spool

Part Number	OD	ID	Color	Length
L0405001	1/4"	0.170"	White	500'
L0405005	1/4"	0.170"	Blue	500'
L0405006	1/4"	0.170"	Black	500'
L0405007	1/4"	0.170"	Natural	500'
L0405009	1/4"	0.170"	Red	500'
L0505006	5/16"	0.187"	Black	500'
L0505007	5/16"	0.187"	Natural	500'
L0605001	3/8"	0.250"	White	500'
L0605005	3/8"	0.250"	Blue	500'
L0605006	3/8"	0.250"	Black	500'
L0605007	3/8"	0.250"	Natural	500'
L0605009	3/8"	0.250"	Red	500'
L0802505	1/2"	0.375"	Blue	250'
L0802506	1/2"	0.375"	Black	250'
L0802507	1/2"	0.375"	Natural	250'
L0802509	1/2"	0.375"	Red	250'

LLDPE Tubing Working Temperatures & Pressures			
1/4", 5/16", and 3/8" Tubing		1/2" Tubing	
230 psi @ 70°F	15 bar @ 20°C	150 psi @ 70°F	10 bar @ 20°C
120 psi @ 150°F	8 bar @ 60°C	90 psi @ 150°F	6 bar @ 60°C
60 psi @ 180°F	4 bar @ 80°C	45 psi @ 180°F	3 bar @ 80°C

G.A. Murdock reserves the right to amend without notice the specifications and design of all products.